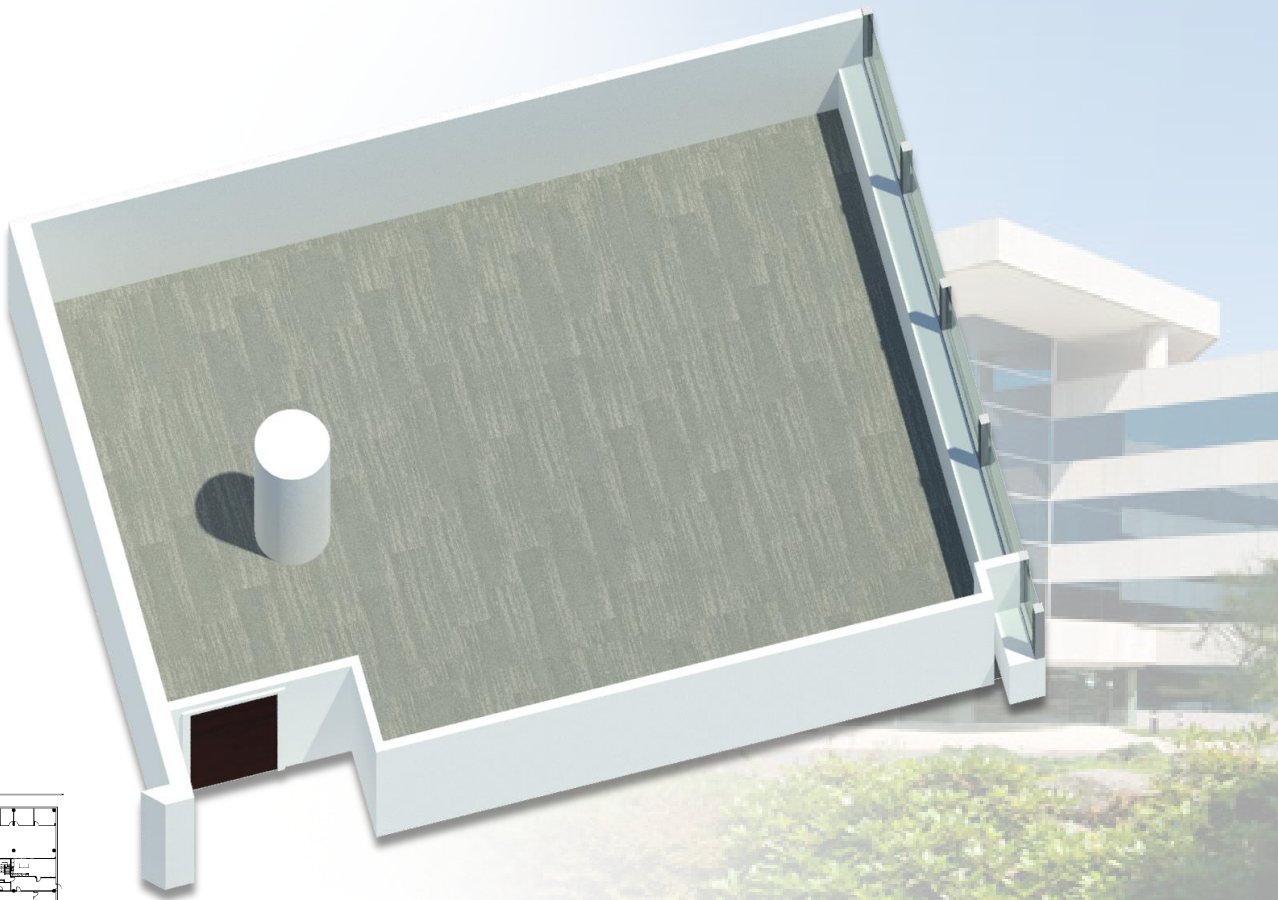
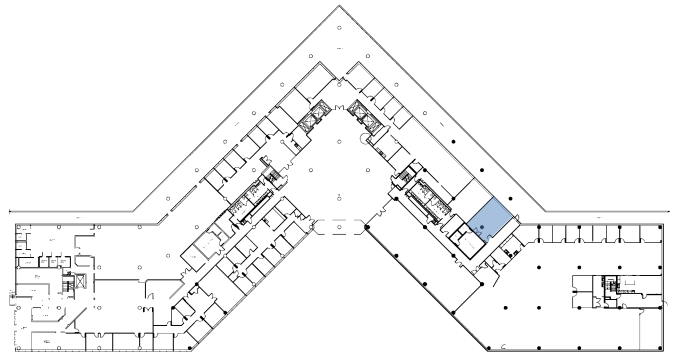


# 500 Summit Lake Drive

1<sup>st</sup> Floor – 798 rsf  
Valhalla, NY



# RECKSON

A Division of  
**SL GREEN**  
REALTY CORP.

Demanding Quality. Delivering Value.

# CBRE

**Robert Swierbut, Vice President Leasing** | 914-872-4744 | robert.swierbut@slgreen.com

**Willard Overlock, Vice President Leasing** | 914-872-4729 | willard.overlock@slgreen.com

**Larry Kwiat, Senior Vice President Leasing** | 203-363-2341 | larry.kwiat@slgreen.com

---

**William V. Cuddy Jr., Senior Vice President** | 203-352-5380 | william.cuddy@cbre.com

**Brian Carcaterra, Senior Vice President** | 203-352-8903 | brian.carcaterra@cbre.com

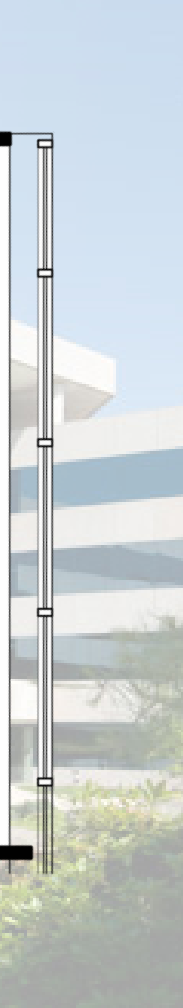
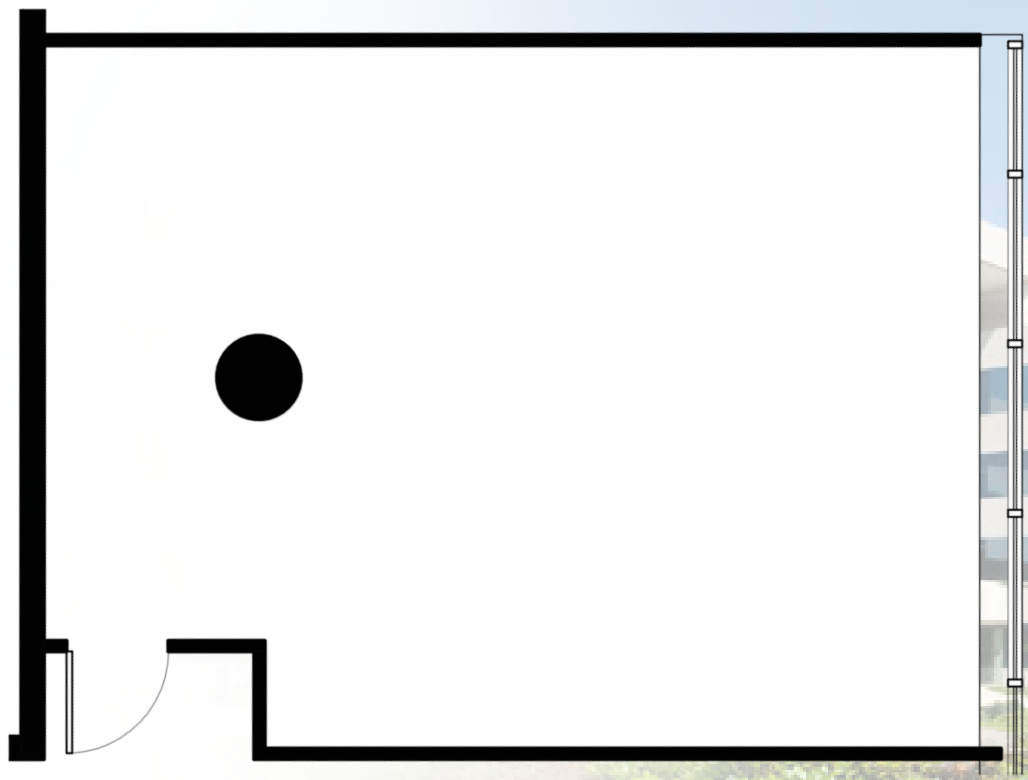
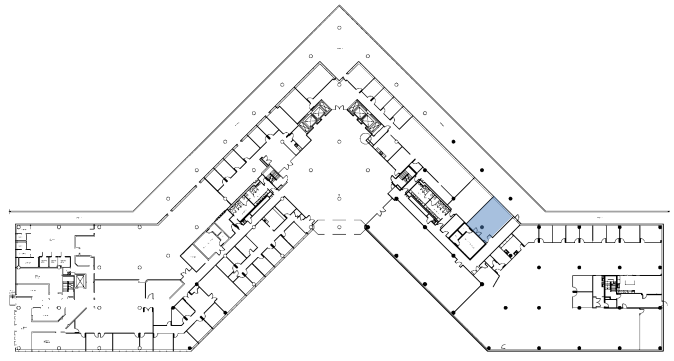
**Mike McCall, Vice President** | 203-352-5321 | michael.mccall@cbre.com

All information is from sources deemed reliable and submitted subject to errors, omissions, change of price, rental, prior sale and withdrawal without notice.



# 500 Summit Lake Drive

1<sup>st</sup> Floor – 798 rsf  
Valhalla, NY



# RECKSON

A Division of  
**SL GREEN**  
REALTY CORP.

Demanding Quality. Delivering Value.

# CBRE

**Robert Swierbut, Vice President Leasing** | 914-872-4744 | robert.swierbut@slgreen.com

**Willard Overlock, Vice President Leasing** | 914-872-4729 | willard.overlock@slgreen.com

**Larry Kwiat, Senior Vice President Leasing** | 203-363-2341 | larry.kwiat@slgreen.com

---

**William V. Cuddy Jr., Senior Vice President** | 203-352-5380 | william.cuddy@cbre.com

**Brian Carcaterra, Senior Vice President** | 203-352-8903 | brian.carcaterra@cbre.com

**Mike McCall, Vice President** | 203-352-5321 | michael.mccall@cbre.com

All information is from sources deemed reliable and submitted subject to errors, omissions, change of price, rental, prior sale and withdrawal without notice.

SLG  
LISTED  
NYSE  
Member  
REBNY  
REAL ESTATE BROKERS ASSOCIATION